



NATA LIGHTING CO.,LTD.  
www.nata.cn  
Email:info@nata.com  
Tel:+86-750-3770000 Fax:+86-750-3771111  
Address:380JinOu Road,GaoXin Zone,Jiang Men City,Guangdong,China

NT

Client:

LumCAT: 2-2645-L

Luminaire: 92.70.411.00

Report No: 20231027-B017

Ballast type: AC

Test No: 20231027-C017

Voltage(V): 34.970

LampCAT: Fortimo\_SLM\_C\_1205

Current(A): 0.401

Lamp flux(lm): 2255.2

Power (W): 14.022

Number of Lamps: 1

PF: 0.000

Length(mm): 0

Width(mm): 0

Phm Type: C

Height(mm): 0

### Photometric Results

Lumens(lm): 2120.60, Efficiency(%): 94.03% , Luminous Efficacy(lm/W): 151.23

Central intensity(cd): 4846.761, Maximum intensity(cd): 4846.761

Angle of maximum intensity: C=0.0  $\gamma$ =0.0

Beam Angle(50%Imax): [C0/180]Total=38.0

[C90/270]Total=38.0

Field angle(10%Imax): [C0/180]Total=62.6

[C90/270]Total=62.6

Maximum s/h(1/2): C0\_180=0.62 C90\_270=0.62

Maximum s/h(1/4): C0\_180=0.61 C90\_270=0.61

Up flux rate of lamp(%): 0.00%

Down flux rate of lamp(%): 94.03%

Up flux rate of LUM(%): - -

Down flux rate of LUM(%): 100.00%

CIE Type : Direct lighting

Output flux ratio in  $\pi$  solid angle : 98.134%

$\gamma(^{\circ})$	Average I(cd)	Zonal F(lm)	Sum F(lm)	Eff Flux(%)	Eff Sum(%)
0.0	4846.761	0.000	0	0.00%	0.00%
1.0	4830.709	4.630	4.63	0.21%	0.22%
2.0	4789.955	13.808	18.439	0.61%	0.87%
3.0	4737.991	22.788	41.227	1.01%	1.94%
4.0	4655.445	31.443	72.67	1.39%	3.43%
5.0	4563.074	39.658	112.327	1.76%	5.30%
6.0	4459.632	47.417	159.744	2.10%	7.53%
7.0	4350.378	54.684	214.427	2.42%	10.11%
8.0	4236.211	61.453	275.88	2.72%	13.01%
9.0	4115.056	67.682	343.562	3.00%	16.20%
10.0	3994.523	73.389	416.951	3.25%	19.66%
11.0	3859.322	78.476	495.427	3.48%	23.36%
12.0	3714.227	82.790	578.217	3.67%	27.27%
13.0	3548.304	86.188	664.405	3.82%	31.33%
14.0	3382.797	88.717	753.122	3.93%	35.51%
15.0	3213.138	90.552	843.674	4.02%	39.78%
16.0	3027.150	91.438	935.112	4.05%	44.10%
17.0	2828.015	91.181	1026.293	4.04%	48.40%
18.0	2617.949	89.792	1116.085	3.98%	52.63%
19.0	2416.669	87.592	1203.677	3.88%	56.76%
20.0	2201.136	84.519	1288.195	3.75%	60.75%
21.0	1986.987	80.420	1368.616	3.57%	64.54%
22.0	1795.809	76.017	1444.633	3.37%	68.12%
23.0	1601.034	71.275	1515.908	3.16%	71.48%
24.0	1387.777	65.346	1581.254	2.90%	74.57%
25.0	1214.209	59.163	1640.417	2.62%	77.36%
26.0	1114.503	54.970	1695.387	2.44%	79.95%
27.0	975.566	51.134	1746.521	2.27%	82.36%
28.0	850.003	46.220	1792.74	2.05%	84.54%
29.0	724.959	41.205	1833.946	1.83%	86.48%
30.0	610.737	36.064	1870.009	1.60%	88.18%
31.0	507.980	31.132	1901.142	1.38%	89.65%
32.0	423.926	26.698	1927.84	1.18%	90.91%
33.0	344.376	22.634	1950.474	1.00%	91.98%
34.0	280.664	18.916	1969.39	0.84%	92.87%
35.0	242.629	16.252	1985.641	0.72%	93.64%
36.0	193.281	13.879	1999.521	0.62%	94.29%
37.0	140.481	10.885	2010.406	0.48%	94.80%

$\gamma(^{\circ})$	Average I(cd)	Zonal F(lm)	Sum F(lm)	Eff Flux(%)	Eff Sum(%)
38.0	111.233	8.402	2018.808	0.37%	95.20%
39.0	89.742	6.860	2025.668	0.30%	95.52%
40.0	72.624	5.663	2031.33	0.25%	95.79%
41.0	60.688	4.747	2036.078	0.21%	96.01%
42.0	52.102	4.098	2040.175	0.18%	96.21%
43.0	45.833	3.628	2043.803	0.16%	96.38%
44.0	40.962	3.276	2047.079	0.15%	96.53%
45.0	37.108	3.000	2050.079	0.13%	96.67%
46.0	34.063	2.783	2052.863	0.12%	96.81%
47.0	31.385	2.603	2055.466	0.12%	96.93%
48.0	29.324	2.454	2057.92	0.11%	97.04%
49.0	27.476	2.333	2060.252	0.10%	97.15%
50.0	25.774	2.220	2062.473	0.10%	97.26%
51.0	24.293	2.118	2064.591	0.09%	97.36%
52.0	23.117	2.034	2066.625	0.09%	97.45%
53.0	22.093	1.967	2068.592	0.09%	97.55%
54.0	21.110	1.904	2070.496	0.08%	97.64%
55.0	20.322	1.849	2072.346	0.08%	97.72%
56.0	19.657	1.807	2074.152	0.08%	97.81%
57.0	19.035	1.769	2075.921	0.08%	97.89%
58.0	18.467	1.734	2077.656	0.08%	97.97%
59.0	17.948	1.702	2079.358	0.08%	98.06%
60.0	17.512	1.675	2081.033	0.07%	98.13%
61.0	17.084	1.651	2082.684	0.07%	98.21%
62.0	16.675	1.627	2084.311	0.07%	98.29%
63.0	16.288	1.603	2085.914	0.07%	98.36%
64.0	15.942	1.581	2087.496	0.07%	98.44%
65.0	15.610	1.561	2089.057	0.07%	98.51%
66.0	15.278	1.541	2090.598	0.07%	98.59%
67.0	14.904	1.518	2092.116	0.07%	98.66%
68.0	14.586	1.494	2093.61	0.07%	98.73%
69.0	14.281	1.473	2095.082	0.07%	98.80%
70.0	13.963	1.451	2096.533	0.06%	98.86%
71.0	13.638	1.427	2097.959	0.06%	98.93%
72.0	13.347	1.403	2099.363	0.06%	99.00%
73.0	13.063	1.381	2100.744	0.06%	99.06%
74.0	12.773	1.358	2102.102	0.06%	99.13%
75.0	12.545	1.338	2103.44	0.06%	99.19%

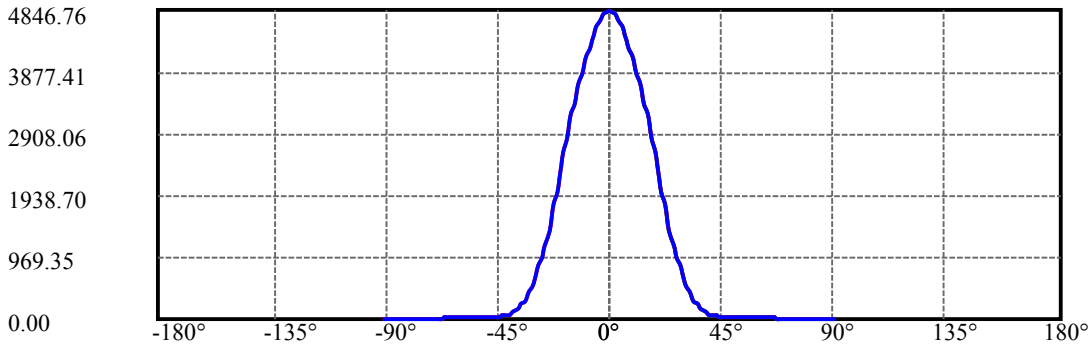
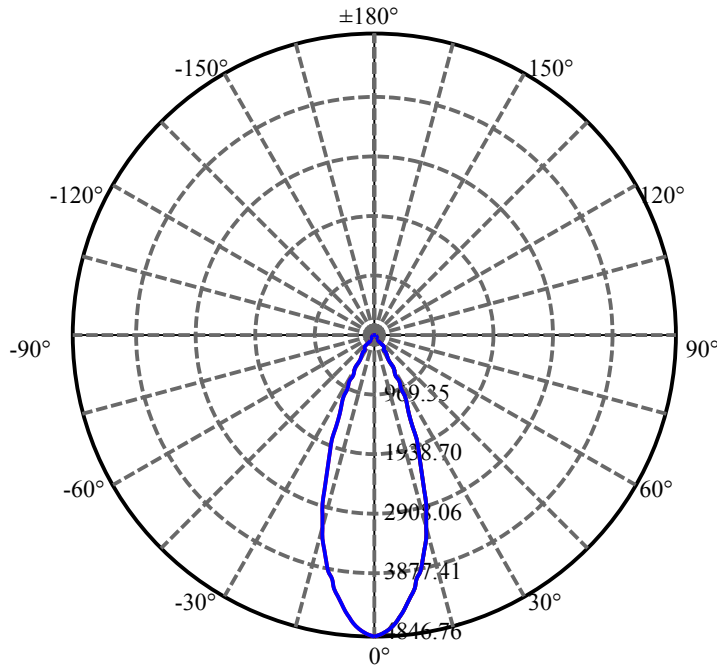
$\gamma(^{\circ})$	Average I(cd)	Zonal F(lm)	Sum F(lm)	Eff Flux(%)	Eff Sum(%)
76.0	12.295	1.319	2104.758	0.06%	99.25%
77.0	11.977	1.294	2106.052	0.06%	99.31%
78.0	11.707	1.268	2107.32	0.06%	99.37%
79.0	11.396	1.241	2108.561	0.06%	99.43%
80.0	11.119	1.214	2109.775	0.05%	99.49%
81.0	10.856	1.188	2110.964	0.05%	99.55%
82.0	10.573	1.162	2112.126	0.05%	99.60%
83.0	10.323	1.136	2113.262	0.05%	99.65%
84.0	10.081	1.112	2114.373	0.05%	99.71%
85.0	9.853	1.088	2115.461	0.05%	99.76%
86.0	9.673	1.067	2116.529	0.05%	99.81%
87.0	9.486	1.049	2117.577	0.05%	99.86%
88.0	9.279	1.028	2118.605	0.05%	99.91%
89.0	9.085	1.007	2119.612	0.04%	99.95%
90.0	8.995	0.991	2120.603	0.04%	100.00%

ZONAL LUMEN SUMMARY

Zone	Lumens	%Lamp	%Fixt
0-30	1870.01	82.92%	88.18%
0-40	2031.33	90.07%	95.79%
0-60	2081.03	92.28%	98.13%
0-90	2119.61	93.99%	99.95%
0-120	2119.61	93.99%	99.95%
0-180	2120.60	94.03%	100.00%
60-90	38.58	1.71%	1.82%
90-120	0.00	0.00%	0.00%
90-130	0.00	0.00%	0.00%
90-150	0.00	0.00%	0.00%
90-180	0.00	0.00%	0.00%
0-26.02	1696.48	75.23%	80.00%

ZONAL LUMEN SUMMARY

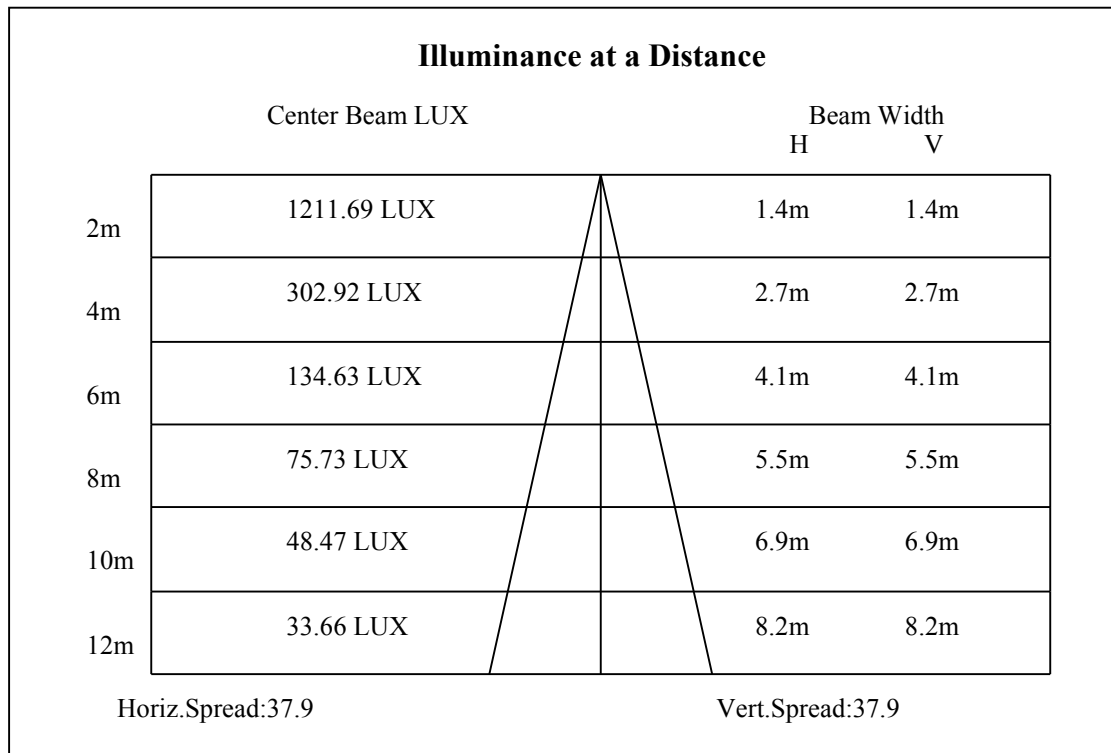
0-10	416.95
10-20	871.24
20-30	581.81
30-40	161.32
40-50	31.14
50-60	18.56
60-70	15.50
70-80	13.24
80-90	9.84
90-100	0.00
100-110	0.00
110-120	0.00
120-130	0.00
130-140	0.00
140-150	0.00
150-160	0.00
160-170	0.00
170-180	0.00

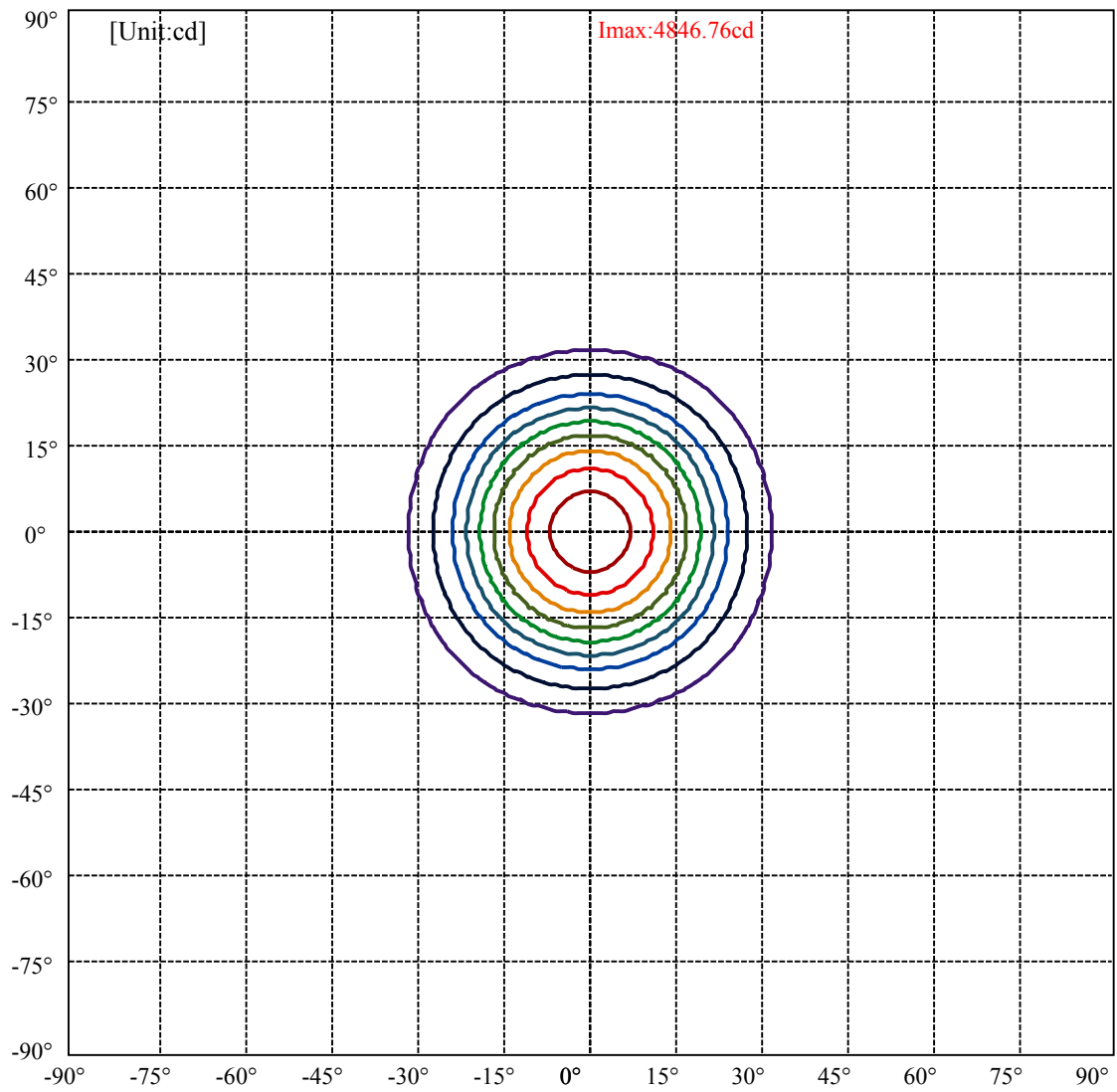


C0(Max): ———  
C0/C180: ———  
C90/C270: ———

Field angle(10%Imax):C0/180Left:31.3 Right:31.3  
:C90/270Left:31.3 Right:31.3

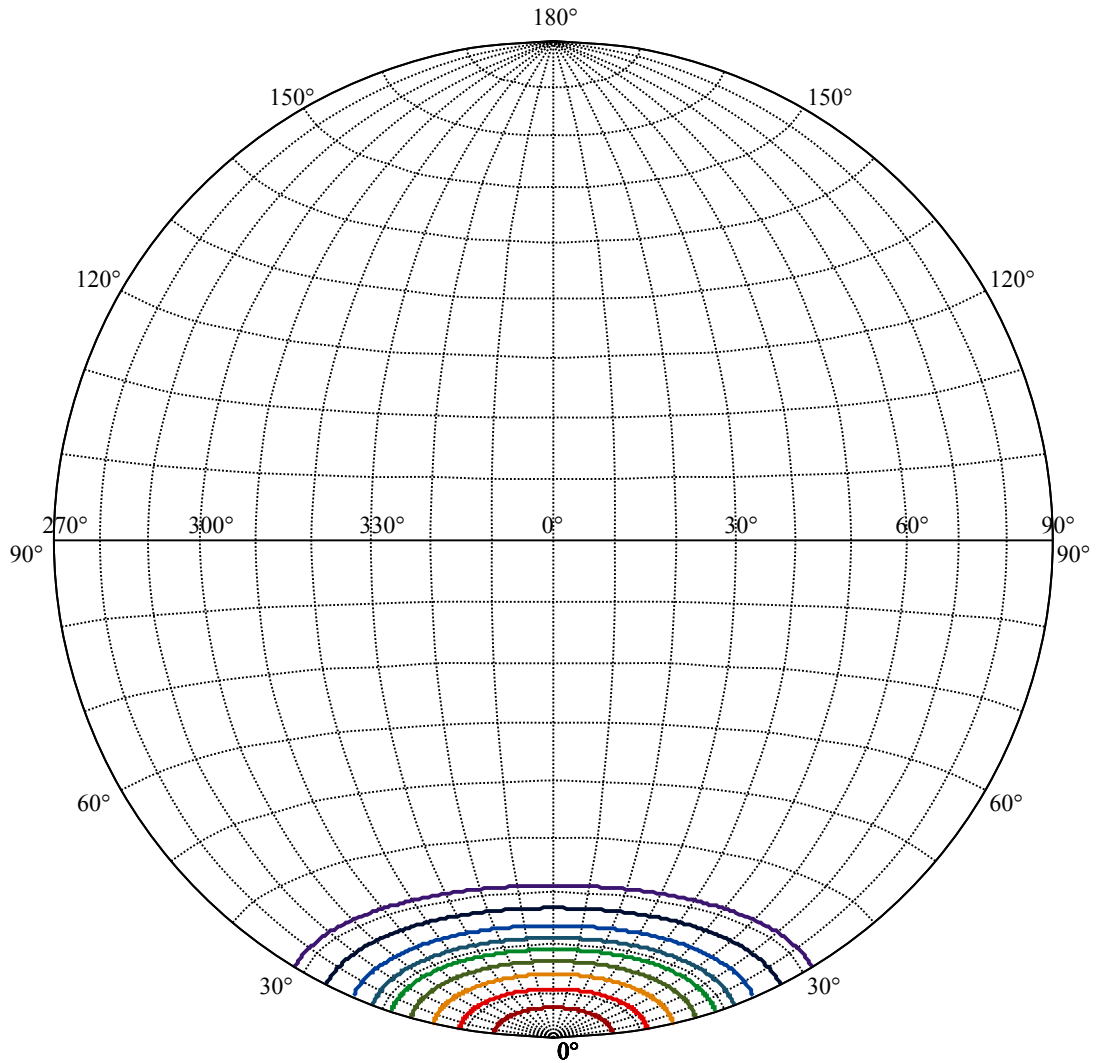
Beam Angle(50%Imax):C0/180Left:19.0 Right:19.0  
:C90/270Left:19.0 Right:19.0





(10%Imax)	484.676	—
(20%Imax)	969.352	—
(30%Imax)	1454.03	—
(40%Imax)	1938.7	—
(50%Imax)	2423.38	—
(60%Imax)	2908.06	—
(70%Imax)	3392.73	—
(80%Imax)	3877.41	—
(90%Imax)	4362.08	—





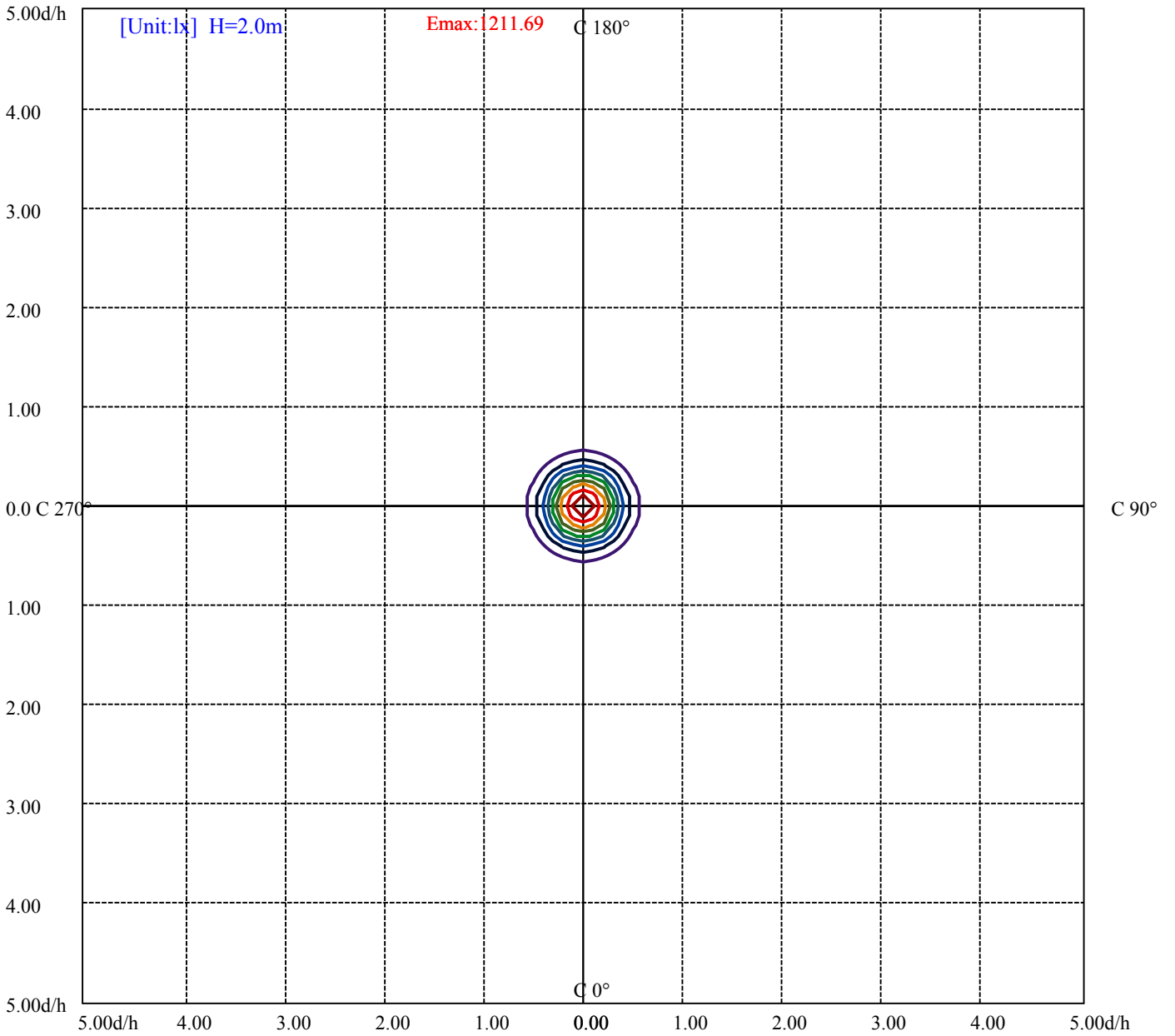
House

[Unit:cd]

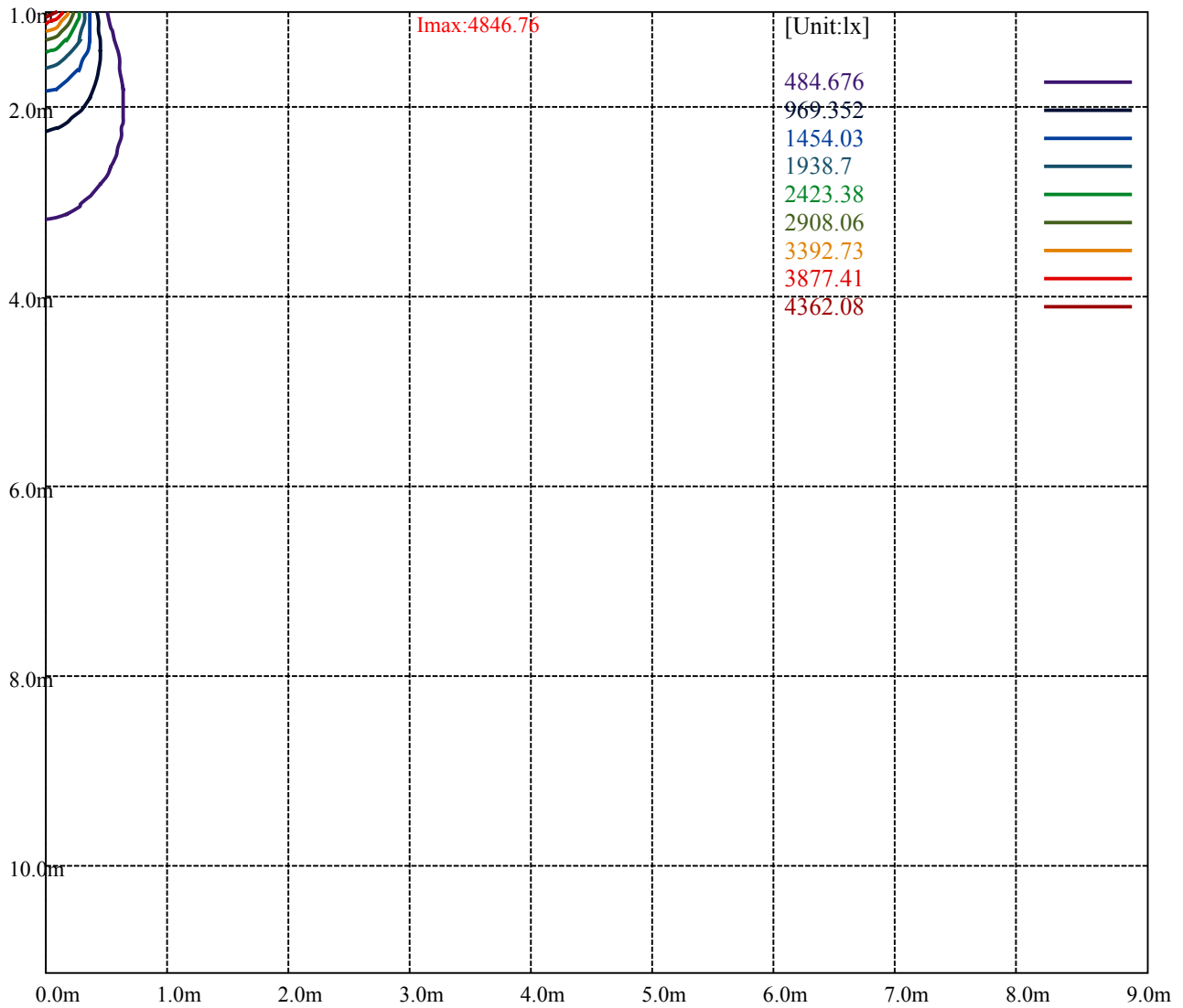
Road

Imax:4846.76

(10%Imax)	484.676	—
(20%Imax)	969.352	—
(30%Imax)	1454.03	—
(40%Imax)	1938.7	—
(50%Imax)	2423.38	—
(60%Imax)	2908.06	—
(70%Imax)	3392.73	—
(80%Imax)	3877.41	—
(90%Imax)	4362.08	—



- (10%Emax) 121.169
- (20%Emax) 242.338
- (30%Emax) 363.5075
- (40%Emax) 484.675
- (50%Emax) 605.845
- (60%Emax) 727.015
- (70%Emax) 848.1825
- (80%Emax) 969.3525
- (90%Emax) 1090.52



Luminance Table

$\gamma$	45	50	55	60	65	70	75	80	85
C0	0	0	0	0	0	0	0	0	0
C45	0	0	0	0	0	0	0	0	0
C90	0	0	0	0	0	0	0	0	0

L(Hor)(65)	L(Ver)(65)	L45(65)	L(Hor)(75)	L(Ver)(75)	L45(75)	L(Hor)(85)	L(Ver)(85)	L45(85)
0	0	0	0	0	0	0	0	0

Glare Table

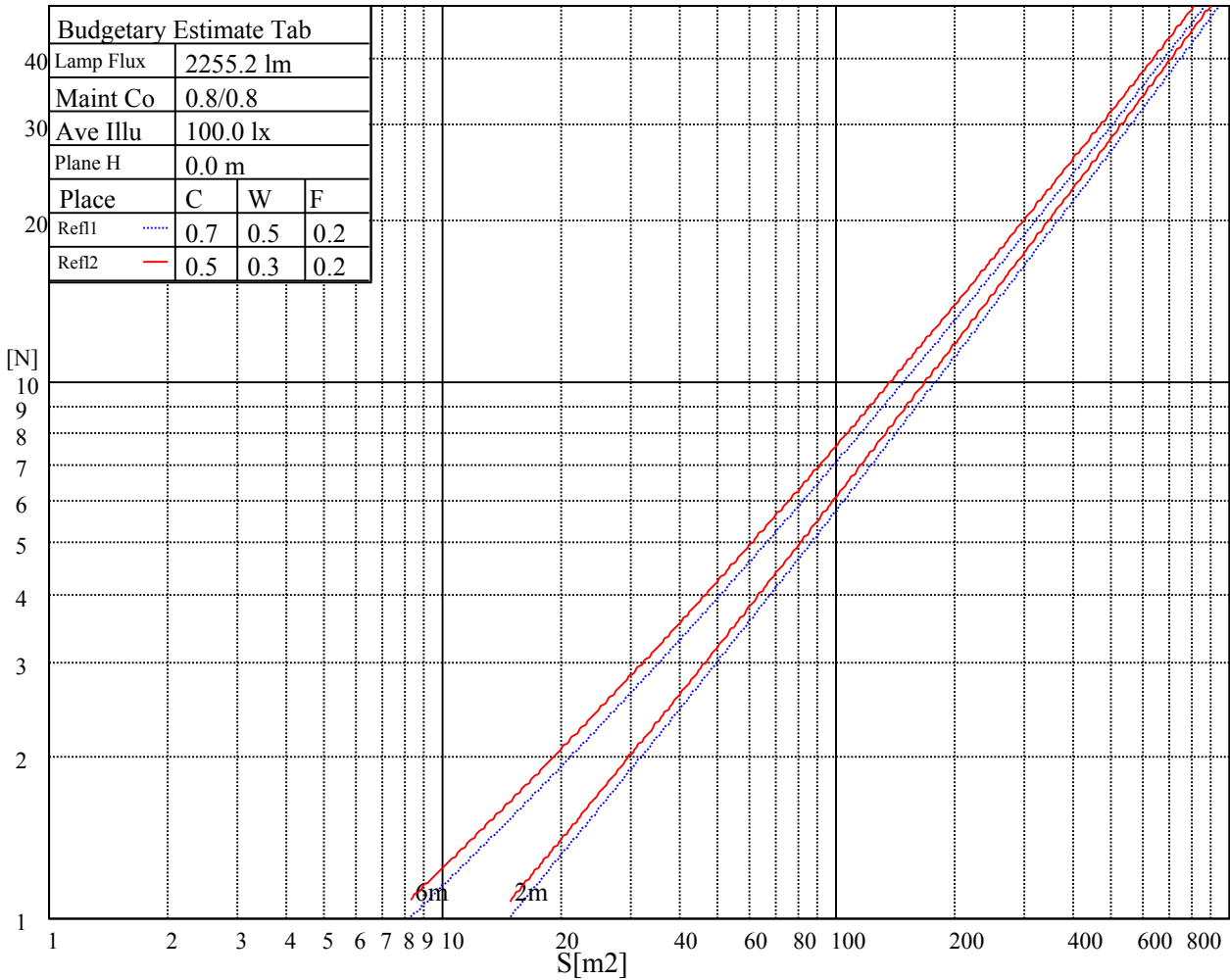
Glare	Quality	Service Values Illuminance(lx)							
1.15	A	2000	1000	500	<=300				
1.5	B		2000	1000	500	<=300			
1.85	C			2000	1000	500	<=300		
2.2	D				2000	1000	500	<=300	
2.55	E					2000	1000	500	<=300
		a	b	c	d	e	f	g	h

Luminance Limiting Curve

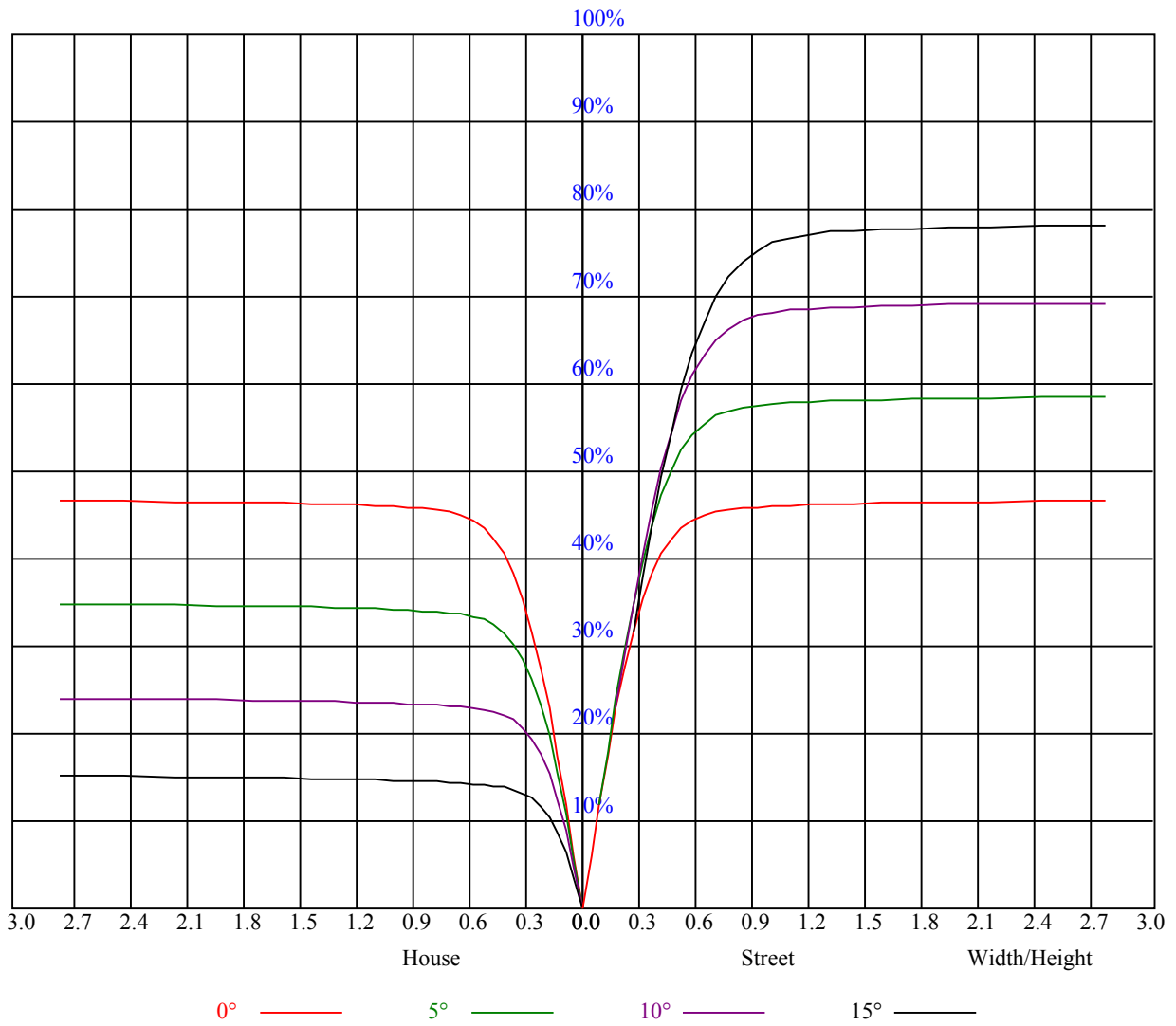


Illumination assessment according UGR										
Rf of Ceiling	70	70	50	50	30	70	70	50	50	30
Rf of Wall	50	30	50	30	30	50	30	50	30	30
Rf of Floor	20	20	20	20	20	20	20	20	20	20
Room dimensions	Viewed crosswise					Viewed endwise				
X	Y									
2H	2H	非数字	非数字	非数字	非数字	非数字	非数字	非数字	非数字	非数字
	3H	非数字	非数字	非数字	非数字	非数字	非数字	非数字	非数字	非数字
	4H	非数字	非数字	非数字	非数字	非数字	非数字	非数字	非数字	非数字
	6H	非数字	非数字	非数字	非数字	非数字	非数字	非数字	非数字	非数字
	8H	非数字	非数字	非数字	非数字	非数字	非数字	非数字	非数字	非数字
	12H	非数字	非数字	非数字	非数字	非数字	非数字	非数字	非数字	非数字
4H	2H	非数字	非数字	非数字	非数字	非数字	非数字	非数字	非数字	非数字
	3H	非数字	非数字	非数字	非数字	非数字	非数字	非数字	非数字	非数字
	4H	非数字	非数字	非数字	非数字	非数字	非数字	非数字	非数字	非数字
	6H	非数字	非数字	非数字	非数字	非数字	非数字	非数字	非数字	非数字
	8H	非数字	非数字	非数字	非数字	非数字	非数字	非数字	非数字	非数字
	12H	非数字	非数字	非数字	非数字	非数字	非数字	非数字	非数字	非数字
8H	4H	非数字	非数字	非数字	非数字	非数字	非数字	非数字	非数字	非数字
	6H	非数字	非数字	非数字	非数字	非数字	非数字	非数字	非数字	非数字
	8H	非数字	非数字	非数字	非数字	非数字	非数字	非数字	非数字	非数字
	12H	非数字	非数字	非数字	非数字	非数字	非数字	非数字	非数字	非数字
12H	4H	非数字	非数字	非数字	非数字	非数字	非数字	非数字	非数字	非数字
	6H	非数字	非数字	非数字	非数字	非数字	非数字	非数字	非数字	非数字
	8H	非数字	非数字	非数字	非数字	非数字	非数字	非数字	非数字	非数字
Variation with the observer position at spacings:										
S = 1.0H	非数字/非数字					非数字/非数字				
S = 1.5H	非数字/非数字					非数字/非数字				
S = 2.0H	非数字/非数字					非数字/非数字				
Standard tables:	BK0					BK0				
Uncorrected UGR	负无穷大					负无穷大				

UGR calculation is based on CIE Publ. 117 ,S/H = 0.25



RHOCC	80			70			50			30			10			0
RHOW	50	30	10	50	30	10	50	30	10	50	30	10	50	30	10	0
RCR	COEFFICIENTS OF UTILIZATION RHOF=20 CU															
0	1.12	1.12	1.12	1.09	1.09	1.09	1.04	1.04	1.04	1.00	1.00	1.00	0.96	0.96	0.96	0.94
1	1.05	1.03	1.01	1.03	1.01	0.99	0.99	0.97	0.96	0.95	0.94	0.93	0.92	0.91	0.90	0.89
2	0.99	0.95	0.92	0.97	0.94	0.91	0.94	0.92	0.89	0.91	0.89	0.87	0.89	0.87	0.86	0.84
3	0.93	0.89	0.86	0.92	0.88	0.85	0.90	0.86	0.84	0.87	0.85	0.83	0.85	0.83	0.81	0.80
4	0.88	0.84	0.81	0.87	0.83	0.80	0.86	0.82	0.79	0.84	0.81	0.78	0.82	0.79	0.77	0.76
5	0.84	0.79	0.76	0.83	0.79	0.76	0.82	0.78	0.75	0.80	0.77	0.74	0.79	0.76	0.74	0.73
6	0.80	0.76	0.72	0.80	0.75	0.72	0.78	0.74	0.71	0.77	0.74	0.71	0.76	0.73	0.70	0.69
7	0.77	0.72	0.69	0.76	0.72	0.68	0.75	0.71	0.68	0.74	0.70	0.68	0.73	0.70	0.67	0.66
8	0.73	0.69	0.65	0.73	0.68	0.65	0.72	0.68	0.65	0.71	0.68	0.65	0.70	0.67	0.65	0.63
9	0.70	0.66	0.63	0.70	0.66	0.63	0.69	0.65	0.62	0.68	0.65	0.62	0.68	0.64	0.62	0.61
10	0.68	0.63	0.60	0.67	0.63	0.60	0.67	0.63	0.60	0.66	0.62	0.60	0.65	0.62	0.60	0.59





Intensity data(cd)

C/γ(°)	0.0	1.0	2.0	3.0	4.0	5.0	6.0	7.0	8.0
0.0	4840.67	4822.41	4779.23	4716.13	4615.38	4514.64	4393.42	4287.69	4177.54
45.0	4870.01	4847.31	4814.66	4785.32	4689.00	4602.10	4488.07	4376.81	4264.44
90.0	4813.00	4780.34	4713.91	4625.35	4533.46	4430.50	4320.90	4189.16	4076.79
135.0	4863.37	4808.57	4764.84	4703.95	4597.67	4504.12	4406.15	4303.19	4174.21
180.0	4840.67	4869.46	4819.64	4772.03	4728.30	4631.99	4539.00	4454.86	4324.78
225.0	4870.01	4809.67	4771.48	4716.68	4633.65	4540.10	4415.00	4318.13	4203.55
270.0	4813.00	4862.81	4833.48	4798.05	4746.02	4662.43	4588.26	4468.70	4364.63
315.0	4863.37	4845.10	4822.41	4786.43	4700.07	4618.70	4526.26	4404.49	4303.74
360.0	4840.67	4822.41	4779.23	4716.13	4615.38	4514.64	4393.42	4287.69	4177.54
C/γ(°)	9.0	10.0	11.0	12.0	13.0	14.0	15.0	16.0	17.0
0.0	4039.15	3909.07	3768.47	3621.79	3423.62	3256.45	3066.59	2872.30	2632.06
45.0	4128.83	4015.35	3891.36	3713.12	3562.56	3397.60	3229.33	3012.90	2829.12
90.0	3961.66	3834.90	3659.43	3504.99	3307.93	3129.14	2958.10	2727.83	2546.82
135.0	4069.04	3923.46	3805.01	3663.85	3477.87	3313.47	3145.19	2961.97	2734.47
180.0	4205.21	4091.74	3944.50	3812.20	3633.41	3495.03	3347.79	3192.24	2980.24
225.0	4056.87	3941.18	3788.95	3649.46	3504.99	3328.41	3173.42	3000.17	2817.50
270.0	4260.57	4159.27	4051.88	3910.73	3781.76	3637.29	3443.55	3285.24	3110.87
315.0	4199.12	4081.22	3964.98	3837.67	3694.30	3504.99	3341.14	3164.57	2973.04
360.0	4039.15	3909.07	3768.47	3621.79	3423.62	3256.45	3066.59	2872.30	2632.06
C/γ(°)	18.0	19.0	20.0	21.0	22.0	23.0	24.0	25.0	26.0
0.0	2433.90	2232.41	2030.37	1787.92	1613.00	1408.20	1095.28	1095.28	970.07
45.0	2644.80	2454.93	2220.79	2024.83	1839.95	1619.09	1456.35	1269.81	1131.98
90.0	2358.06	2121.70	1936.27	1749.17	1582.56	1391.04	1078.40	1078.40	983.85
135.0	2548.48	2363.60	2166.54	1927.97	1747.51	1582.01	1389.38	1245.46	1107.07
180.0	2793.70	2608.26	2420.06	2180.38	1993.28	1809.51	1635.15	1432.55	1277.56
225.0	2582.25	2380.76	2184.81	1991.07	1756.37	1584.22	1423.14	1089.19	1089.19
270.0	2862.89	2659.19	2407.33	2203.07	1997.71	1806.19	1583.67	1427.02	1280.33
315.0	2719.52	2512.50	2242.93	2031.48	1836.08	1608.02	1440.85	1075.96	1075.96
360.0	2433.90	2232.41	2030.37	1787.92	1613.00	1408.20	1095.28	1095.28	970.07
C/γ(°)	27.0	28.0	29.0	30.0	31.0	32.0	33.0	34.0	35.0
0.0	847.57	736.37	632.19	513.02	426.89	351.94	288.84	221.58	178.07
45.0	1001.35	875.14	730.11	623.28	523.65	434.53	338.76	290.05	290.05
90.0	828.37	713.07	606.18	509.97	402.70	329.35	253.46	203.98	163.13
135.0	942.67	818.13	674.21	572.36	482.68	400.76	312.75	281.75	281.75
180.0	1102.09	969.80	846.36	704.65	601.69	504.82	415.15	327.69	281.75
225.0	959.06	838.55	695.96	592.28	477.26	397.49	329.41	271.12	211.17
270.0	1142.50	987.51	867.39	753.36	622.73	528.63	446.15	354.26	292.82
315.0	980.92	861.47	747.27	616.97	526.25	443.88	370.48	294.87	242.28
360.0	847.57	736.37	632.19	513.02	426.89	351.94	288.84	221.58	178.07
C/γ(°)	36.0	37.0	38.0	39.0	40.0	41.0	42.0	43.0	44.0
0.0	143.20	115.86	89.95	74.40	59.95	51.81	45.78	40.24	36.81
45.0	174.59	132.02	106.39	82.92	69.63	59.62	50.59	45.06	40.85
90.0	124.10	100.91	83.03	69.69	57.51	50.48	45.06	40.80	36.48
135.0	160.91	123.22	100.19	82.42	69.03	56.79	49.82	44.50	39.41
180.0	281.75	171.54	130.30	106.17	86.63	68.58	58.07	50.48	43.67
225.0	171.60	139.27	113.14	87.62	72.62	61.28	51.26	45.50	41.13
270.0	292.82	181.01	145.30	116.57	89.34	73.18	61.44	53.03	46.88
315.0	197.28	160.03	121.56	98.14	76.28	63.77	54.80	47.05	42.46
360.0	143.20	115.86	89.95	74.40	59.95	51.81	45.78	40.24	36.81

Intensity data(cd)

C/γ(°)	45.0	46.0	47.0	48.0	49.0	50.0	51.0	52.0	53.0
0.0	33.99	31.00	29.01	27.23	25.79	24.13	23.03	22.09	21.20
45.0	36.59	33.88	31.55	29.50	27.68	25.79	24.47	23.30	22.09
90.0	33.77	31.39	28.84	27.18	25.68	24.02	22.97	21.75	20.92
135.0	36.20	33.54	30.67	28.67	27.01	25.19	23.97	22.86	21.98
180.0	39.58	35.43	32.77	30.50	28.51	26.79	25.02	23.80	22.64
225.0	36.75	33.88	30.94	28.84	27.12	25.63	23.97	22.81	21.86
270.0	41.24	37.70	34.76	32.27	29.50	27.73	25.79	24.47	23.25
315.0	38.75	35.70	32.55	30.39	28.51	26.90	25.13	23.86	22.81
360.0	33.99	31.00	29.01	27.23	25.79	24.13	23.03	22.09	21.20
C/γ(°)	54.0	55.0	56.0	57.0	58.0	59.0	60.0	61.0	62.0
0.0	20.31	19.60	18.93	18.38	17.88	17.38	16.99	16.66	16.27
45.0	21.20	20.43	19.65	19.10	18.43	17.93	17.55	17.16	16.66
90.0	20.20	19.54	19.04	18.38	17.88	17.49	17.10	16.66	16.27
135.0	20.92	20.20	19.60	19.10	18.49	18.05	17.66	17.16	16.77
180.0	21.53	20.76	20.04	19.43	18.76	18.27	17.71	17.27	16.94
225.0	21.03	20.09	19.48	18.93	18.43	17.82	17.38	16.94	16.55
270.0	22.03	21.15	20.43	19.60	19.04	18.49	17.99	17.49	17.05
315.0	21.64	20.81	20.09	19.37	18.82	18.16	17.71	17.33	16.88
360.0	20.31	19.60	18.93	18.38	17.88	17.38	16.99	16.66	16.27
C/γ(°)	63.0	64.0	65.0	66.0	67.0	68.0	69.0	70.0	71.0
0.0	15.94	15.61	15.28	14.95	14.56	14.28	13.95	13.62	13.34
45.0	16.33	16.00	15.72	15.39	14.95	14.67	14.39	14.00	13.67
90.0	15.94	15.61	15.28	14.89	14.61	14.28	13.89	13.62	13.34
135.0	16.33	16.05	15.72	15.39	15.00	14.67	14.34	14.12	13.73
180.0	16.44	16.05	15.78	15.44	15.06	14.72	14.50	14.17	13.84
225.0	16.16	15.78	15.44	15.17	14.72	14.50	14.17	13.84	13.56
270.0	16.66	16.33	15.89	15.55	15.22	14.83	14.56	14.17	13.89
315.0	16.50	16.11	15.78	15.44	15.11	14.72	14.45	14.17	13.73
360.0	15.94	15.61	15.28	14.95	14.56	14.28	13.95	13.62	13.34
C/γ(°)	72.0	73.0	74.0	75.0	76.0	77.0	78.0	79.0	80.0
0.0	13.06	12.73	12.51	12.29	11.96	11.68	11.46	11.18	10.85
45.0	13.34	13.06	12.79	12.57	12.29	12.01	11.73	11.40	11.18
90.0	13.06	12.79	12.51	12.29	12.01	11.68	11.40	11.07	10.79
135.0	13.45	13.17	12.84	12.62	12.40	11.96	11.73	11.40	11.07
180.0	13.56	13.28	12.95	12.73	12.57	12.23	11.96	11.62	11.35
225.0	13.28	13.01	12.73	12.45	12.23	11.90	11.62	11.35	11.07
270.0	13.56	13.34	13.01	12.79	12.57	12.34	12.01	11.68	11.46
315.0	13.45	13.12	12.84	12.62	12.34	12.01	11.73	11.46	11.18
360.0	13.06	12.73	12.51	12.29	11.96	11.68	11.46	11.18	10.85
C/γ(°)	81.0	82.0	83.0	84.0	85.0	86.0	87.0	88.0	89.0
0.0	10.63	10.35	10.13	9.91	9.74	9.52	9.35	9.13	9.02
45.0	10.90	10.63	10.35	10.07	9.85	9.69	9.52	9.30	9.02
90.0	10.57	10.30	10.02	9.85	9.63	9.52	9.30	9.08	8.97
135.0	10.79	10.52	10.24	10.02	9.74	9.58	9.41	9.19	8.97
180.0	11.07	10.79	10.57	10.30	10.02	9.80	9.63	9.47	9.24
225.0	10.85	10.57	10.35	10.07	9.91	9.74	9.52	9.35	9.13
270.0	11.13	10.85	10.57	10.30	10.07	9.85	9.69	9.47	9.24
315.0	10.90	10.57	10.35	10.13	9.85	9.69	9.47	9.24	9.08
360.0	10.63	10.35	10.13	9.91	9.74	9.52	9.35	9.13	9.02

Intensity data(cd)

C/γ(°)	90.0
0.0	9.08
45.0	9.02
90.0	8.97
135.0	8.97
180.0	8.97
225.0	9.02
270.0	8.97
315.0	8.97
360.0	9.08